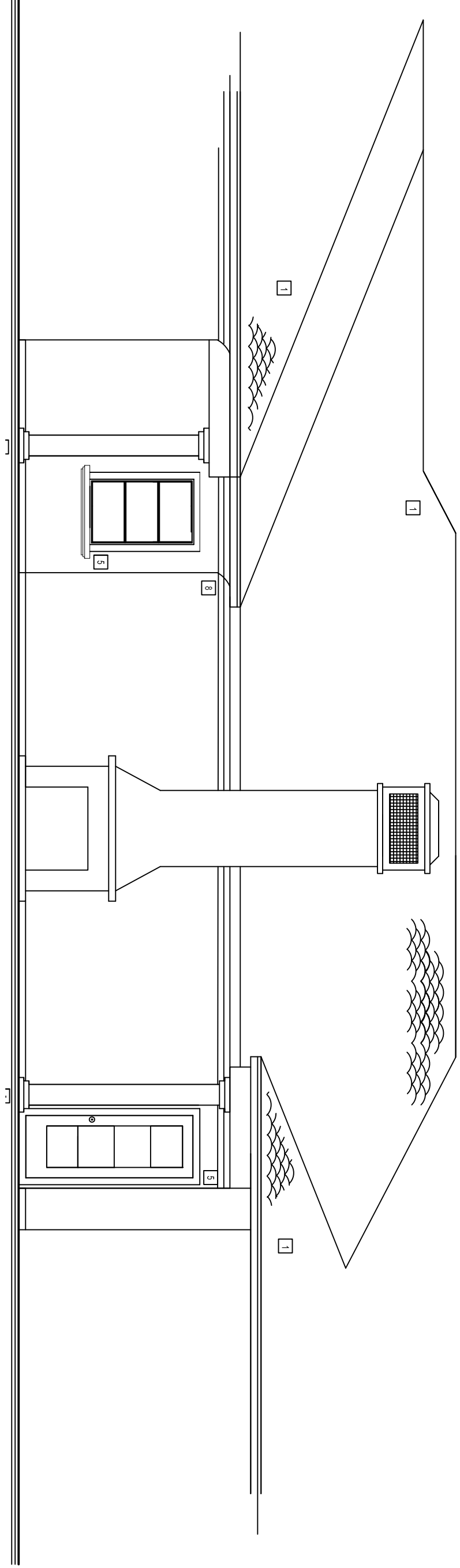


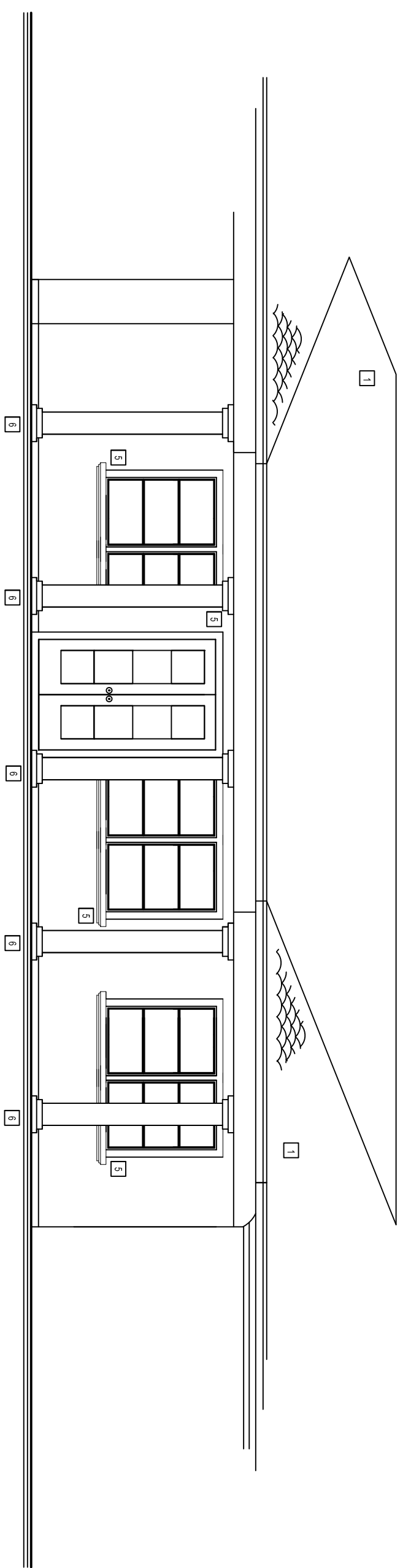
INTERIOR ELEVATION 1

SCALE: 3/16" = 1'-0"



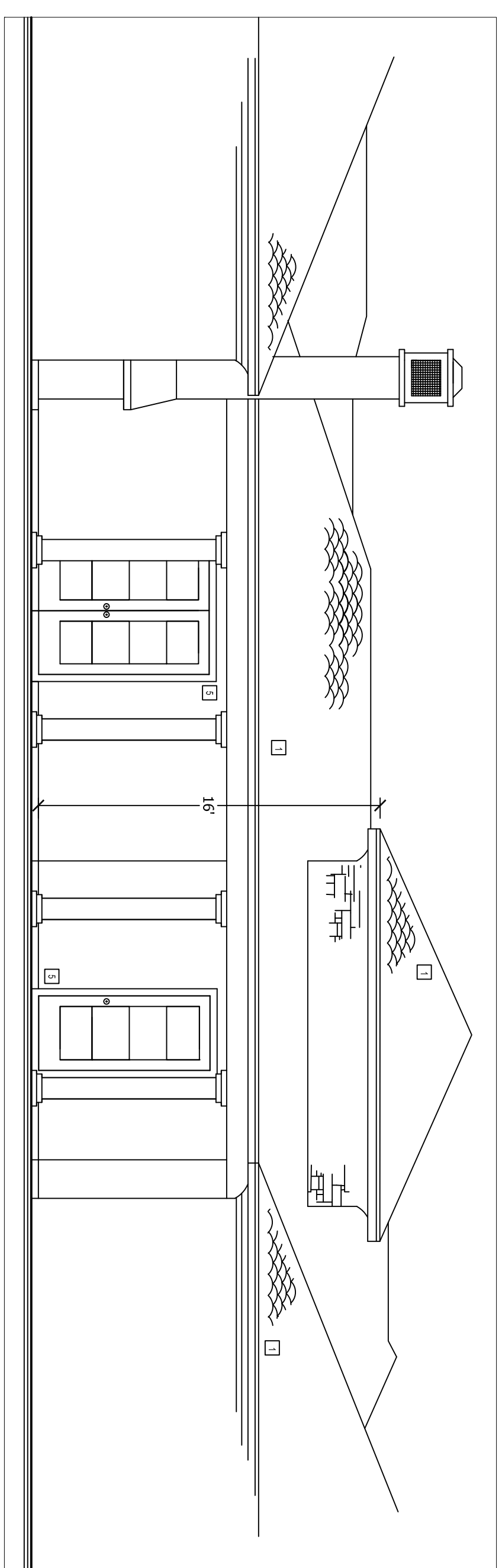
INTERIOR ELEVATION 2

SCALE: 3/16" = 1'-0"



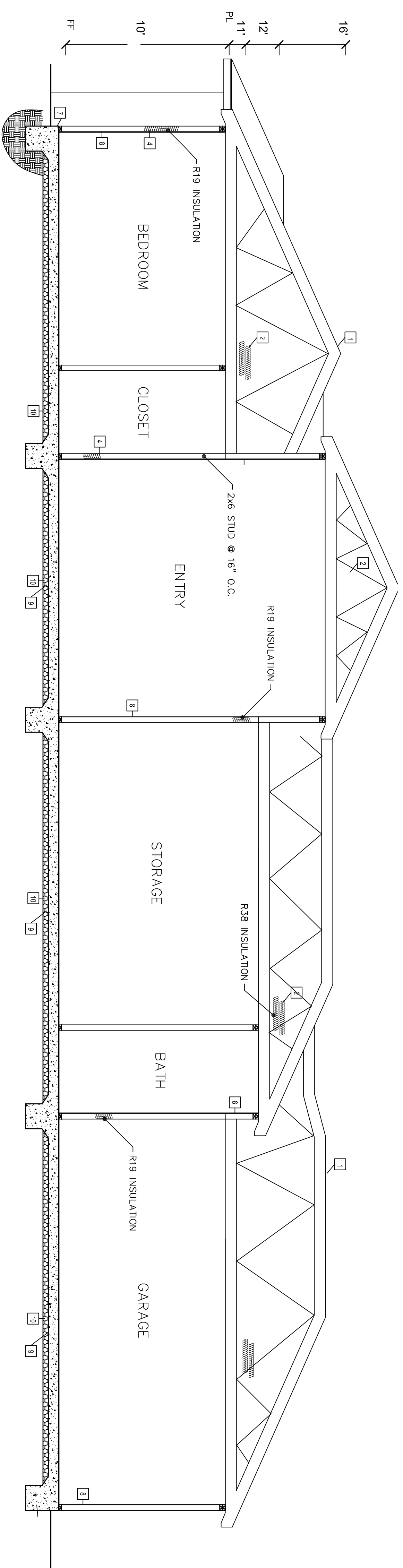
INTERIOR ELEVATION 3

SCALE: 3/16" = 1'-0"



INTERIOR ELEVATION 4

SCALE: 3/16" = 1'-0"



STRUCTURAL SECTION

SCALE: 1/4" = 1'-0"

KEYNOTES

- 1 CONCRETE ROOF TILE OVER #30 FELT
- 2 2-COAT STUCCO SYSTEM OVER 1/2" EXPANDED POLYSTYRENE BOARD OVER 1" OSB SHEATHING OVER 2" x 4" WOOD FASCIA OVER WALL FRAMING
- 3 STUCCO TRIM
- 4 SIFT METAL SPARK ARRESTOR HOOD/REC. ITEM #10250001
- 5 STUCCO TRIM AROUND ALL WINDOWS & DOORS
- 6 12"x12" PRECAST COLUMN
- 7 PREFORMED METAL CUTLER
- 8 FOAM DECORATIVE TRIM
- 9 2X WOOD FASCIA

KEYNOTES

- 1 CONC. TILE ROOF/ 1/2" PLY. DECK O/ TRUSSES @ 24" C/C
- 2 R-38 INSULATION
- 3 2X6" CEILING JOISTS @ 16" C/C
- 4 R-19 INSULATION
- 5 2X6" STUDS @ 16" C/C
- 6 2X4" STUDS @ 16" C/C
- 7 WEEP SCREED
- 8 1/2" GMB TRP @ WALLS/CEILING
- 9 4" CRUSHED BASE
- 10 4" CONC. SLAB
- 11 2X8" STUDS @ 16" C.C.