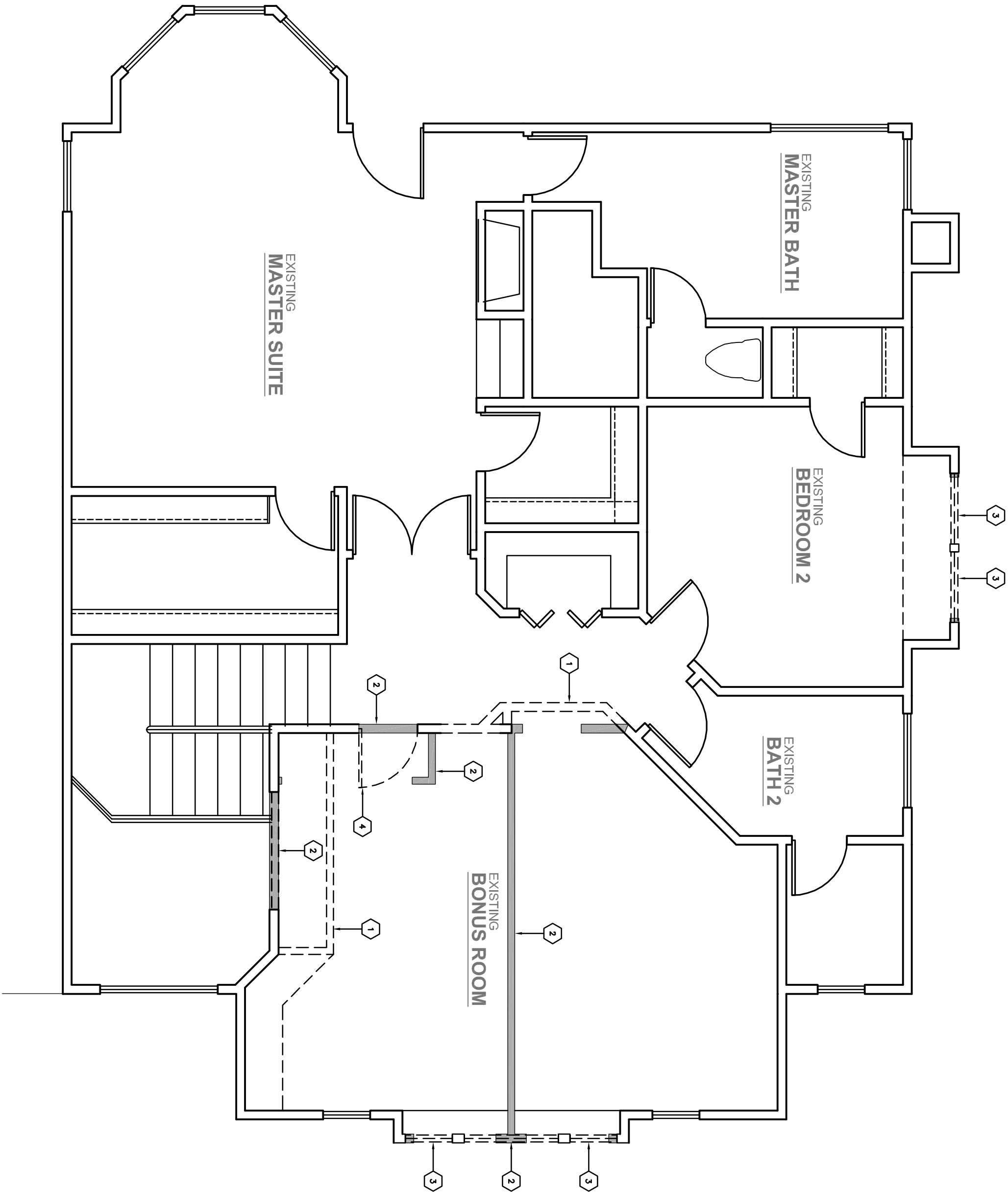


NOTE:  
ARCHITECT HAS NOT INSPECTED EXISTING RESIDENCE AND IS NOT RESPONSIBLE FOR SUCH INSPECTION. CONTRACTOR TO CONDUCT THOROUGH INSPECTION DURING DEMOLITION TO VERIFY INTEGRITY AND ADEQUACY OF ALL RELEVANT EXISTING FRAMING, BRACING, MEMBERS, CONNECTIONS, ETC., WHICH WOULD AFFECT THE STRUCTURAL INTEGRITY OF THE RESIDENCE AND THE PROPOSED SCOPE OF WORK.

DEMO FLOOR PLAN KEY NOTES

- REMOVE (E) NON-BEARING WALLS AS SHOWN
- ADD NEW WALLS AS SHOWN (SEE REVISED FLOOR PLAN)
- REMOVE (E) DOOR OR WINDOW AND ADJUST OPENING FOR SIZES
- REMOVE (E) DOOR OR WINDOW AND FILL OPENING AS NEEDED. SEE REVISED FLOOR PLAN.
- CUT (N) OPENING IN (E) WALL. SEE REVISED FLOOR PLAN AND DOOR OR WINDOW SCHEDULE FOR SIZES.



EXISTING SECOND FLOOR PLAN WITH DEMOLITION

SCALE: 1/4"=1'-0"

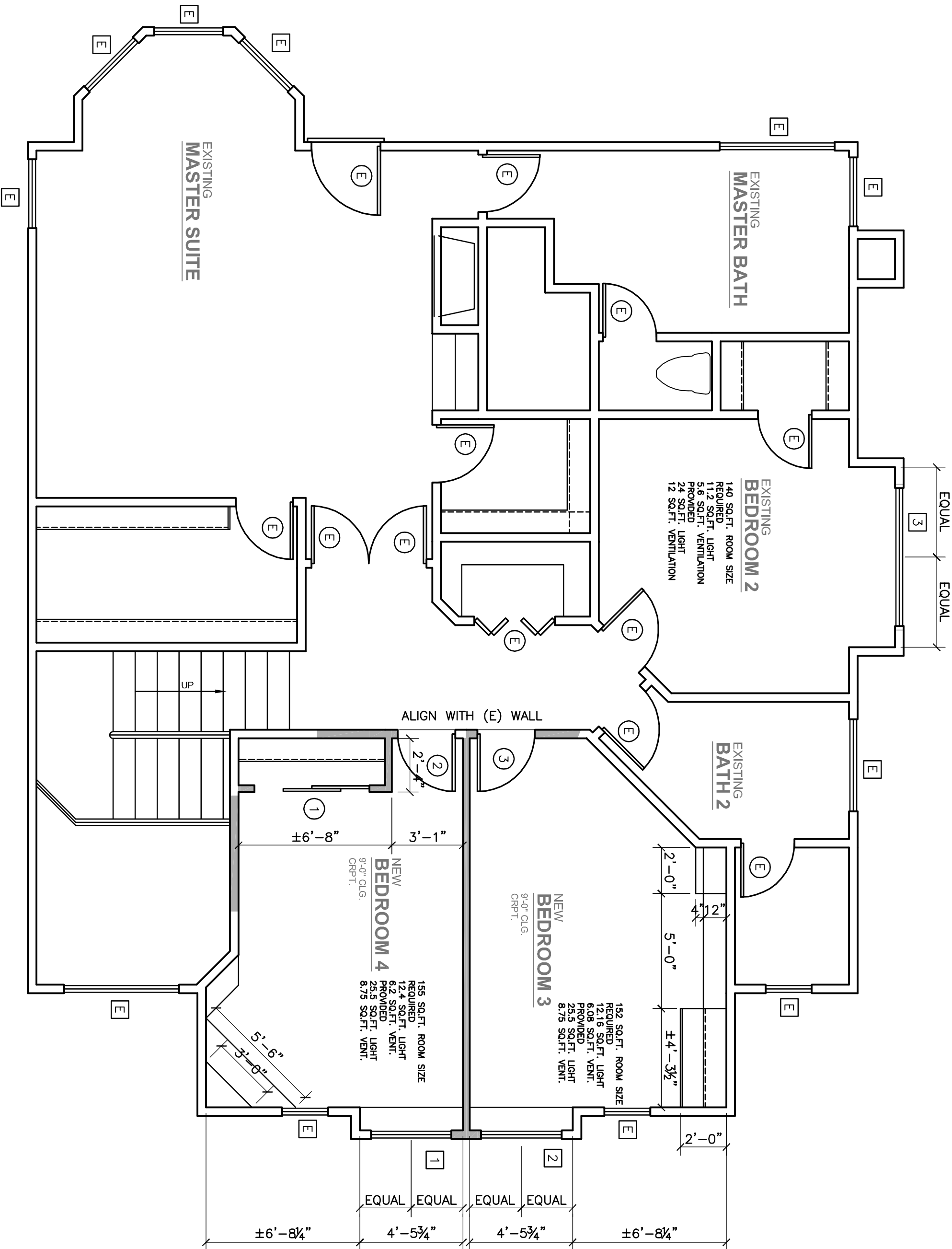
WINDOW SCHEDULE

NO.	SIZE	TYPE	MAT.	REMARKS
1	3'-0"x3'-0"	SINGLE HANG	WHL.	
2	3'-0"x3'-0"	SINGLE HANG	WHL.	
3	6'-0"x4'-0"	HORIZONTAL SLIDER	WHL.	

- WINDOWS IN SLEEPING ROOM(S) SHALL HAVE A NET CLEAR OPENABLE AREA OF 5.7 SQ. FT. THE MINIMUM NET OPENABLE HEIGHT DIMENSION SHALL BE 20" AND THE MINIMUM NET OPENABLE WIDTH DIMENSION SHALL BE 24". THE MINIMUM NET OPENABLE HEIGHT DIMENSION SHALL BE 24". THE MINIMUM NET OPENABLE WIDTH DIMENSION SHALL BE 20". ALL WINDOW HEADER HEIGHTS TO MATCH (E) WINDOW HEADER HEIGHTS
- ALL WINDOW HEADER HEIGHTS TO MATCH (E) WINDOW HEADER HEIGHTS
- THE TOTAL AMOUNT OF GLAZING IS BEING DECREASED BY 5 SQUARE FEET
- ALL NEW WINDOWS TO MEET OR EXCEED MINIMUM U-FACTOR AND SHGC

DOOR SCHEDULE

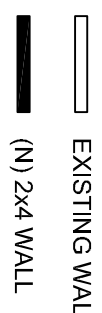
NO.	SIZE	TYPE	MAT.	REMARKS
1	2'-0"x6'-0"	INTERIOR BRASS DOORS	MATCHING	
2	2'-0"x6'-0"	INTERIOR DOOR	MATCHING	
3	2'-0"x6'-0"	INTERIOR DOOR	MATCHING	



REVISED SECOND FLOOR PLAN - DIMENSION

SCALE: 1/4"=1'-0"

WALL LEGEND

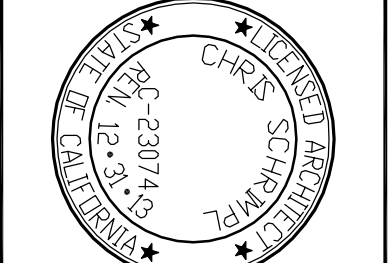


REVISIONS

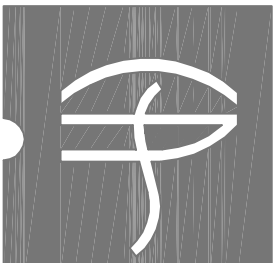
NO.	DESCRIPTION	DATE	BY

**SILVA RESIDENCE**  
INTERIOR REMODEL  
4508 PEBBLE BEACH  
STOCKTON, CALIFORNIA 95219

REVISED SECOND FLOOR PLAN - DIMENSION  
EXISTING SECOND FLOOR WITH DEMOLITION



CHRIS SCHARRAPL  
CORPORATION  
3300 DOW Pkwy, Ste. E  
STOCKTON, CA 95218  
PH: 209.966.2664  
CSCHARRAPL@GMAIL.COM



DATE: 22 MAY 13

SCALE: 1/4"=1'-0"

DRAWN: MC

JOB: 1250-12

A2

3 OF 4